

Spermatic Cord Liposarcoma

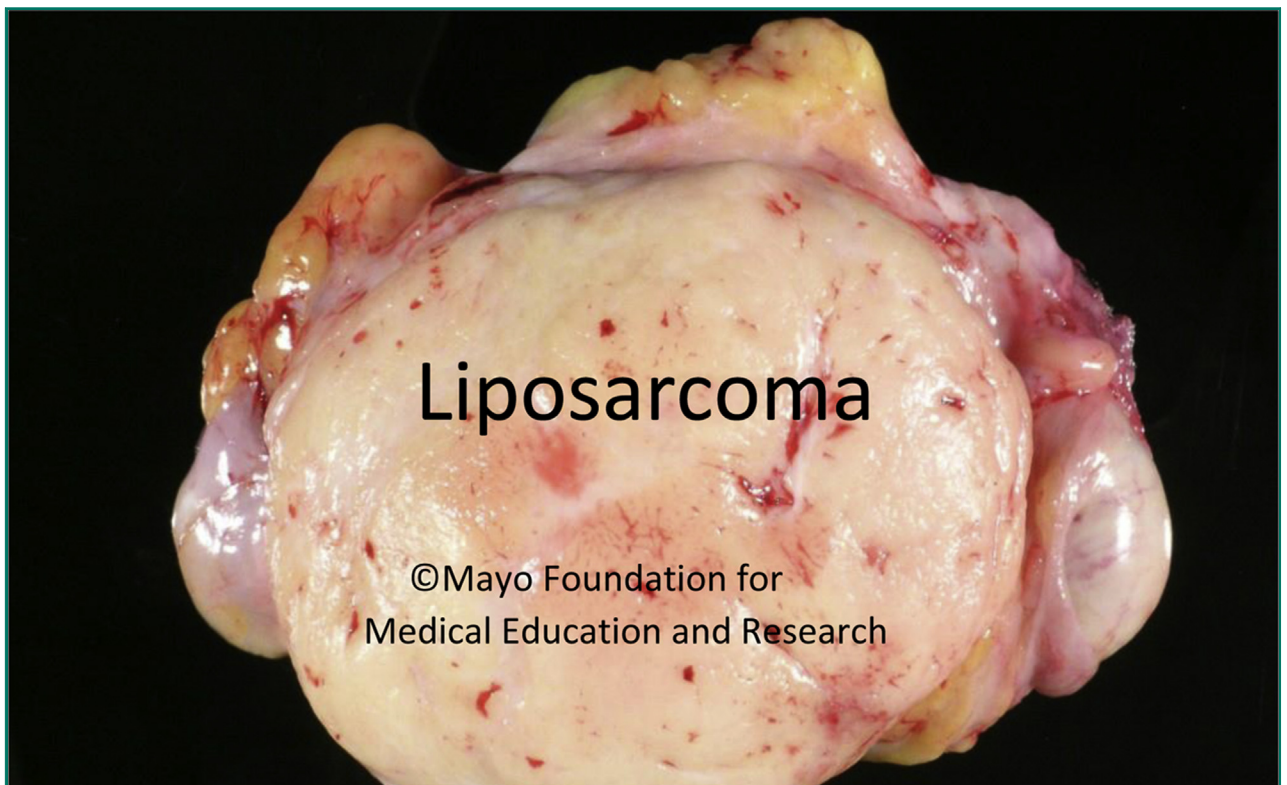


Lori A. Erickson, MD

An older male patient presented with a 10-cm paratesticular mass. The tumor was resected, and the photograph shows the cut surface of a spermatic cord liposarcoma.

From Department of Laboratory Medicine and Pathology, Mayo Clinic, Rochester, MN

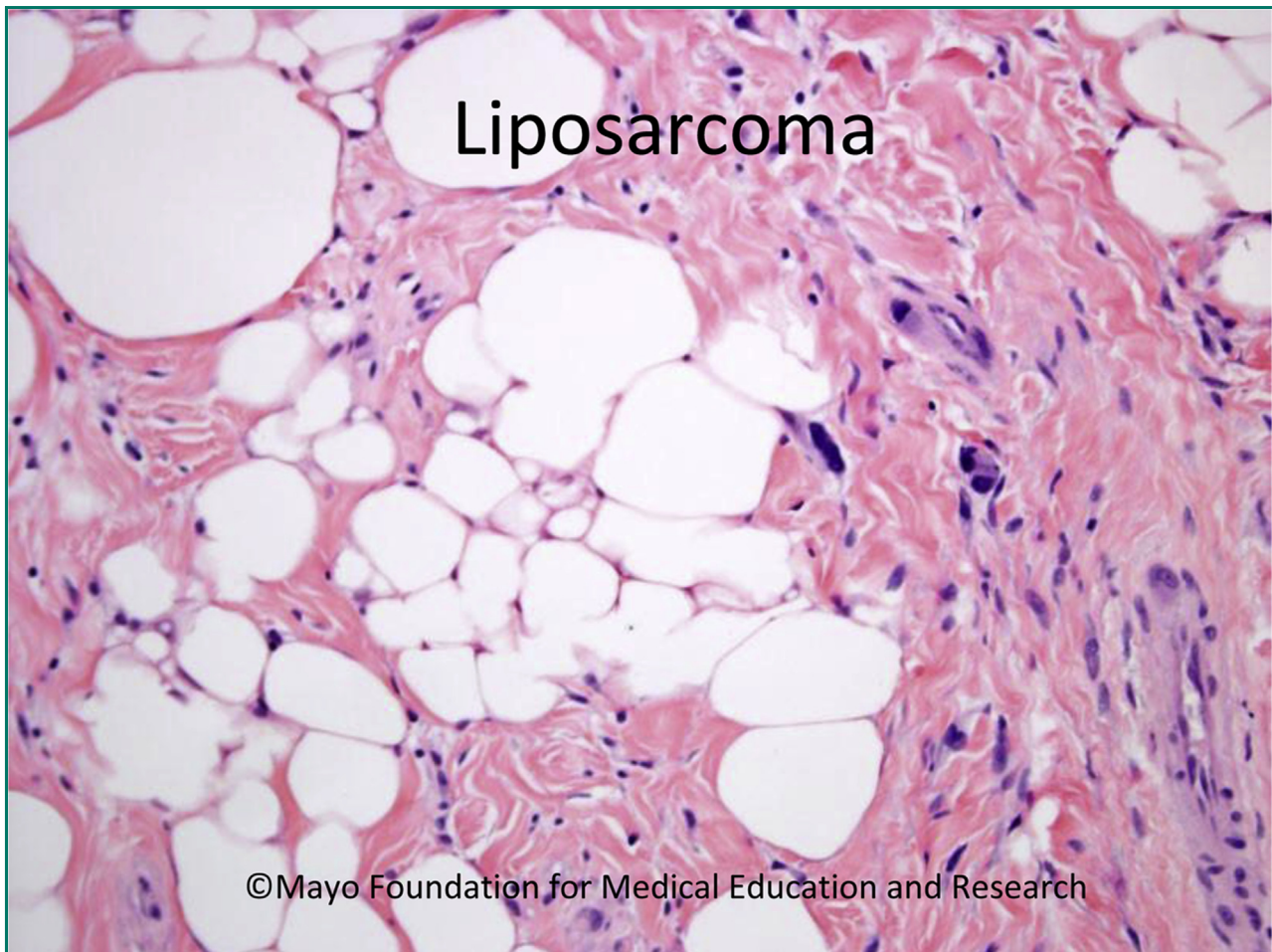
Which statement is correct regarding paratesticular tumors?



- a. Liposarcoma is the most common spermatic cord tumor overall
- b. Liposarcoma is the most common spermatic cord sarcoma in adults
- c. Rhabdomyosarcoma is the most common spermatic cord sarcoma in adults
- d. Among paratesticular tumors, lipoma is very rare

(see page 738 for answer)

The answer is b. Liposarcoma is the most common spermatic cord sarcoma in adults



Liposarcoma is the most common paratesticular sarcoma in adults, whereas rhabdomyosarcomas tend to occur in children.^{1,2} The most common location for paratesticular tumors is the spermatic cord.¹ The majority of spermatic cord tumors are lipomas, whereas liposarcomas are the most common malignant spermatic cord tumor.¹ Although spermatic cord liposarcomas usually occur in older adults, they can occur over a broad age range.

REFERENCES

1. Rodriguez D, Olumi AF. Management of spermatic cord tumors: a rare urologic malignancy. *Ther Adv Urol.* 2012;4(6):325-334.
2. Rodriguez D, Barrisford GW, Sanchez A, Preston MA, Kreydin EI, Olumi AF. Primary spermatic cord tumors: disease characteristics, prognostic factors, and treatment outcomes. *Urol Oncol.* 2014;32(1):52.e19-e25.